

The Domino A200

Superior general purpose printer

Reliability Comes As Standard

Whatever your production cycle demands the Domino A-Series will print dependably, ensuring maximum productivity with minimal operator intervention.

Consistent Print Quality

Whether running continuously or shutting down daily, the A-Series printhead technology delivers precise print every time.

Responds to the Environment

Intelligent system designs allow the product to perform in a wide range of environments, minimising the effects of temperature and humidity.

Flexible Installation

A-Series printers can be installed with only an electrical connection required, eliminating the need for a factory air supply.

It Cleans Itself!

Unique ink system design using large internal reservoirs and a nozzle seal allows the A-Series to have truly automatic printhead cleaning giving unrivalled start up and shut down time after time.

Easy to Use

One button controls the complete start up and shut down process, eliminating potential operator errors and possible delays associated with manual printhead cleaning. Codes are simple to set up using the full sized keyboard and display. Topic keys provide operators quick access to the most regularly used functions.

Code Confidently

The real time message monitor displays codes as they are printed and can be viewed at any time to make sure that the right code is on the right product at the right time.

Essentials for Reliability

General Purpose

Rugged cabinet constructed in 304 grade stainless steel is suitable for use in a wide range of general manufacturing environments. The easy to wipe clean IP55 cabinet is splash and dust proof.

Simple to Use

Easy to operate, easy to read backlit display with big button keyboard provides access to intuitive control and data entry software. Most commonly used functions are made accessible using topic keys.

Add Fluids in Seconds

Colour coding and sealed container design make sure that the right fluids are fitted without spills.



Flexible Applications

The A200 can print up to 4 lines with a variety of print formats which include logos, bar codes/dot codes, automatic serial numbering/batch coding and real time clocks.



Reliable Start Ups

Domino provides the only sealed nozzle technology on the market ensuring clean dependable start up even after extended periods of shutdown.



Flexible and Reliable Installations

Optimum reliability is achieved through the use of surface mount technology and PCMCIA cards for fast configuration and programming.



PORTABLE
PACKAGED
SYSTEMS

A-SERIES
a a a . e e e .



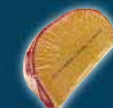
The food industry is a major user of ink jet marking



Clear consumer coding of important information



Multi-line printing up to four lines, can be achieved



Ethanol-based inks carry a low risk of taint for certain types of food products



Products from many industries require type identification or batch traceability

 **DOMINO**

Control Unit

Control Panel: Membrane touch button
Cabinet: Stainless Steel (304) designed to IP53 (BS EN 60529:1992)
Cabinet dimensions: 245mm x 475mm x 725mm
(9.6" x 18.7" x 28.5")
Weight: 36kg (79lbs)

Character Control

- Auto repeat
- Auto invert/reverse
- User defined clock format
- Sequential/batch numbering
- Inverse reverse and bold characters
- Character width and height adjustment
- Print delay
- Product counter
- Barcodes
- Message repeat

Data Input Options

Serial RS232
Serial RS485
Rate: 110-38.4k Baud, software configurable

Ink System

Viscosity control: Automatic
Ink bleed control: Automatic on start up
Ink and make-up refill: 825ml (87qt) cartridge automatically metered
Peltier: Optional

Printhead

Dimensions: 240mm x 41mm x 47mm
(9.45" x 1.61" x 1.85")
Conduit length: 3m (11.8') or 6m (23.6')
Positive air: Optional internal supply
Airdryer: Internal compressor or factory air option

Environment

Temperature range: 5 - 45°C (40 - 112°F) operating
Humidity: 10 - 90% (non-condensing)
Electrical requirements: Single phase, fully auto-ranging
90 - 132V/180 - 264V, 50/60Hz, 200VA

Standard Connections

Product detector: 12V 100mA for photocell or proximity detector; IP68 6 way socket
Open collector or TTL encoder
12V via IP68 6 way socket

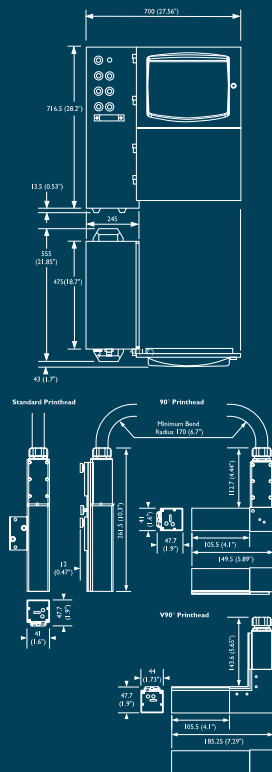
Options

Alarm beacon connector: IP68 7 way socket
Auxiliary alarms connector: IP68 9 way plug
User port connector: IP68 25 way socket

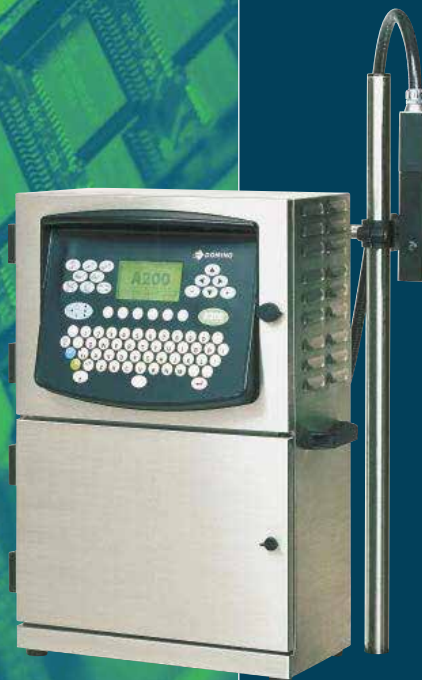
Accessories

Full range of photocells, stands and bracketry

Dimensions



The Domino A200



This information is provided by

Shop Online
Click Here

JETEC Corporation
2817 McGaw, Irvine, CA 92614
Tel: 714-979-9011 / 949-477-6161
Fax: 714-475-5950
Contact: sales@jetec.com
www.jetec.com

